

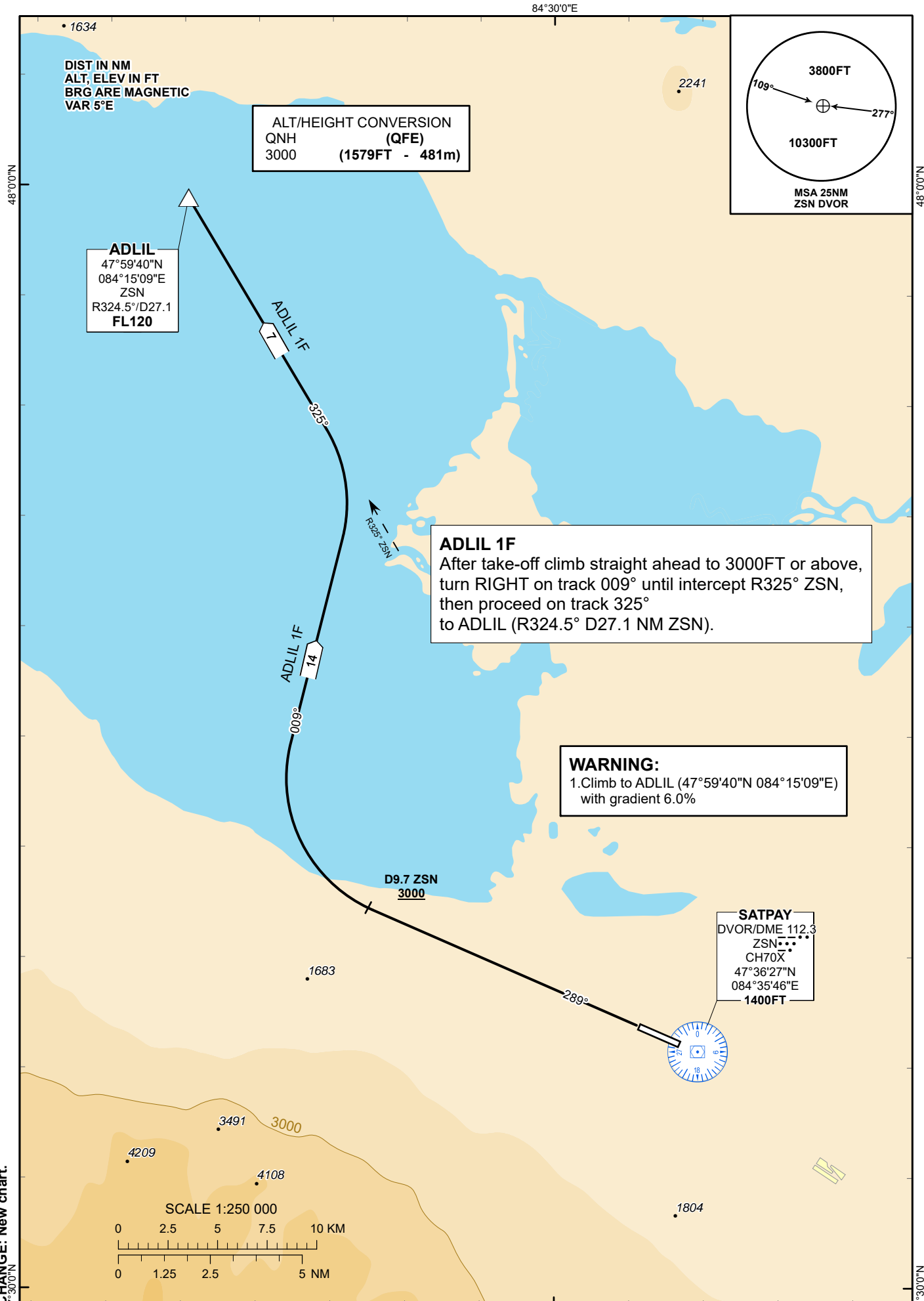
STANDARD DEPARTURE  
CHART - INSTRUMENT  
(SID) - ICAO

TRANSITION ALTITUDE  
10000 FT

SATPAY TOWER 122.9

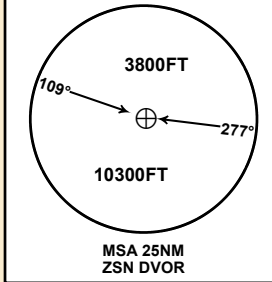
ADLIL 1F

SATPAY  
RWY 29



DIST IN NM  
ALT, ELEV IN FT  
BRG ARE MAGNETIC  
VAR 5°E

ALT/HEIGHT CONVERSION  
QNH (QFE)  
3000 (1579FT - 481m)

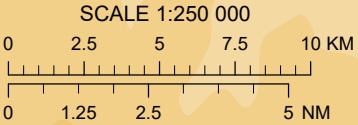
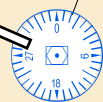


**ADLIL**  
47°59'40"N  
084°15'09"E  
ZSN  
R324.5°/D27.1  
**FL120**

**ADLIL 1F**  
After take-off climb straight ahead to 3000FT or above, turn RIGHT on track 009° until intercept R325° ZSN, then proceed on track 325° to ADLIL (R324.5° D27.1 NM ZSN).

**WARNING:**  
1. Climb to ADLIL (47°59'40"N 084°15'09"E) with gradient 6.0%

**SATPAY**  
DVOR/DME 112.3  
ZSN  
CH70X  
47°36'27"N  
084°35'46"E  
1400FT



CHANGE: New chart.